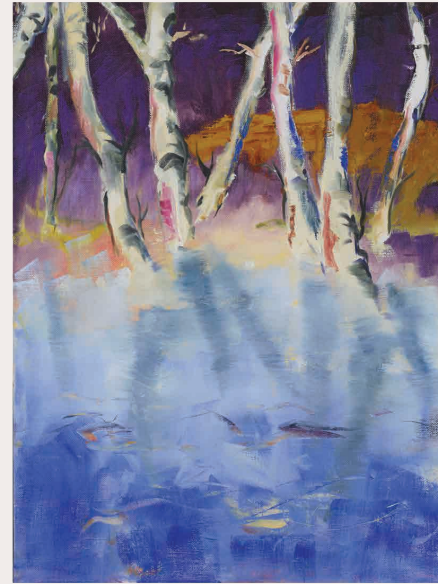


16. *Three Pomegranates*, 2013
Oil on canvas
30 x 40 inches

17. *Wendell with Red Bandana*, 2012
Oil on canvas
30 x 24 inches

18. *Wendell in Fringed Boots*, 2012
Oil on canvas
40 x 29 inches

19. *Winter Landscape I*, 2014
20. *Winter Landscape II*, 2014
Oil on canvas
36 x 36 inches (each)



14

15



7



8

Cover image: Jan Dilenschneider, *Calm and Distant Thoughts*, 2015.



6



16

www.fairfield.edu/museum



ART NEW ENGLAND
CONTEMPORARY ART AND CULTURE



Jan Dilenschneider



Dualities

June 4 – September 18, 2015



Fairfield University

THE BELLARMINE MUSEUM OF ART



Connecticut artist Jan Dilenschneider finds much of her inspiration in the wondrous variegation of nature. Influences from Impressionism and Expressionism echo in her rich palette, loose brush strokes, and luminous vistas, while her affinity for landscape and the atmospheric effects of light and color link her to the venerable local tradition of landscape painting exemplified by the Cos Cob School that flourished a century ago. "I am greatly influenced by living on Long Island Sound, where many subjects lie within a mile of my home and studio," Dilenschneider has mused—"beautiful old trees, crystal blue water, elegant grasses, birds and great storms. I see a painting in everything: spring green leaves against bright blue skies, or misty trees that fade to blue-gray. The beauty of the world is my inspiration."

17 The title of this exhibition, *Dualities*, springs from the dual nature of

Dilenschneider's work: she paints expressive landscapes, still lifes and portraits, but she also creates bold gestural, abstract paintings. That many of the works in this exhibition are pairs or duos expands on the theme of dualism. Some pairs are intended to be seen almost touching—true diptychs—while others, separated but proximate, still express to the viewer their mutual affinity.

Dilenschneider's paintings have been the subject of several solo shows in Paris but until now have not been featured at an American museum or gallery. The Bellarmine Museum of Art is pleased to mount the first such exhibition of her work, and to recognize with gratitude the support of Fairfield University President Father Jeffrey von Arx, S. J., and the efforts of Carey Mack Weber, Collections Manager and Registrar, in bringing it to fruition.

Linda Wolk-Simon
 Director and Chief Curator
 University Museums



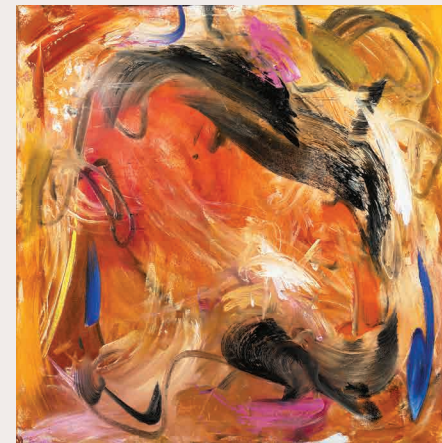
19



20

Checklist of the Exhibition

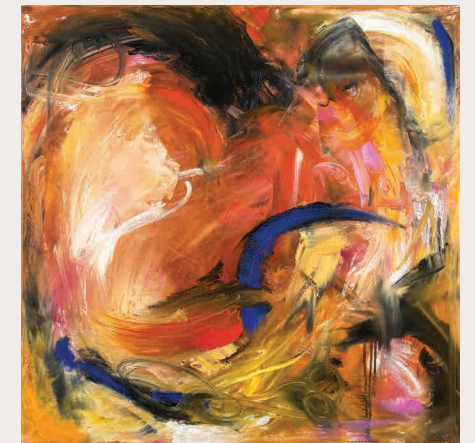
All works by Jan Dilenschneider



9



10



11

1. *Abstract in Red and Green I*, 2015
2. *Abstract in Red and Green II*, 2015
 Oil on canvas
 30 x 30 inches (each)
3. *Calm and Distant Thoughts I*, 2015
4. *Calm and Distant Thoughts II*, 2015
 Oil on canvas
 40 x 30 inches (each)
 (on cover)
5. *Chinese Vase with Fruit*, 2013
 Oil on canvas
 30 x 40 inches
6. *Fruit with Blue Bowl*, 2013
 Oil on canvas
 30 x 40 inches
7. *Reeds along the Shoreline I*, 2015
8. *Reeds along the Shoreline II*, 2015
 Oil on canvas
 36 x 36 inches (each)
9. *Rusty Movement I*, 2014
10. *Rusty Movement II*, 2014
11. *Rusty Movement III*, 2014
 Oil on canvas
 36 x 36 inches (each)
12. *Rusty Reeds on the River*, 2014
 Oil on canvas
13. *Misty Distance*, 2014
 Oil on linen
 30 x 40 inches (each)
14. *Silver Birch near the Water I*, 2015
15. *Silver Birch near the Water II*, 2015
 Oil on linen
 40 x 30 inches (each)



13



12